



Annual Clinic & Provider Registration and Clinical Quality Reporting for 2018

Lindsey Ziegler
Project Specialist/Data Analyst

MN Community Measurement

- Accelerating the improvement of health through public reporting
- Our vision:
 - To be the primary trusted source for health data sharing and measurement
 - To drive change that improves health, patient experience, cost and equity of care for everyone in our community
 - To be a resource used by providers and patients to improve care
 - To partner with others to use our information to catalyze significant improvements in health



MN Community Measurement

- Reporting History
 - 2004: HEDIS measures by medical group.
 - Health plan data
 - 2006: Developed DDS Method to allow reporting measures by clinic
 - Data submitted voluntarily by clinics
 - 2010: Statewide Quality Reporting and Measurement System.

Today's Agenda

Timeline

- Milestone Dates

Getting Started

- Important Websites

Registration

- Required Information
- Clinic & Provider Registration Requirements

Clinical Measures

- Measure Specifications

Data Submission Process

- Pre-Submission Data Certification
- Data File Preparation & Data Submission

Data Validation Process

- Quality Checks
- Audit Expectations

Resources

- Available tools and assistance

2018 Registration & Reporting Timelines

Task	Portal Opens	Portal Closes
Annual Clinic and Provider Registration	November 1, 2017	February 9, 2018
Cycle A Data Submission <ul style="list-style-type: none"> • Colorectal Cancer Screening • Optimal Diabetes Care • Optimal Vascular Care • Asthma • Depression Care Measures 	<ul style="list-style-type: none"> • January 8, 2018 • January 8, 2018 • January 8, 2018 • January 8, 2018 • January 8, 2018 	<ul style="list-style-type: none"> • January 31, 2018 • February 15, 2018 • February 15, 2018 • February 15, 2018 • February 28, 2018
Cycle B Data Submission <ul style="list-style-type: none"> • Pediatric Preventive Care: Adolescent Mental Health and/or Depression Screening • Total Knee Replacement • Spine Surgery: Lumbar Discectomy/Laminotomy • Spine Surgery: Lumbar Spinal Fusion 	<ul style="list-style-type: none"> • April 2, 2018 • April 16, 2018 • April 16, 2018 • April 16, 2018 	<ul style="list-style-type: none"> • May 11, 2018 • May 11, 2018 • May 11, 2018 • May 11, 2018
Patient Experience of Care Survey <ul style="list-style-type: none"> • Pre-Survey Validation • Surveys in the Field 	<ul style="list-style-type: none"> • April 2018 • September 2018 	<ul style="list-style-type: none"> • August 2018 • February 2019
Health Information Technology (HIT) Survey	September 15, 2018	October 15, 2018



Getting Started...

Important Websites

- MNCM.org
 - Submitting Data > Training and Guidance



Training and Guidance

MN Community Measurement offers a variety of resources and training opportunities to support medical groups and clinics directly submitting data to the organization. All trainings are free of charge, unless otherwise noted. This section is designed for professionals who are familiar with the data submission process or who have access to the data portal. Included here is a quick reference to the most current data submission guides and reference handbooks. Check back often to see our updates to available data submission processes and training opportunities.

• [View the 2018 Clinic and provider Registration Guide \(PDF\)](#)

[Data Portal & Registration](#) | [Data Collection Guides](#) | [Data Review](#) | [Training](#)

The MNCM Data Portal

• [View the 2018 Clinic and Provider Registration Guide \(PDF\)](#)

CALENDARS AND PLANNING RESOURCES

- [MNCM Slate of 2017 Measures \(PDF\)](#)
Measures approved by the MNCM Board of Directors for public reporting in 2017.
- [MNCM DDS 2018 Planning Calendar \(PDF\)](#)
Download the latest Direct Data Submission (DDS) calendar
- [MNCM 2017 Q&A Sessions Calendar \(PDF\)](#)
View the expected topics for this year. Topics may be revised, as necessary.
- [Minnesota Department of Health \(MDH\) Resources](#)
Visit the MDH website for helpful fact sheets, guides and other reports.

- MNCM Data Portal
 - <https://data.mncm.org/login>

Welcome to the MNCM Data Portal!

Log In

Please Log In

E-mail Address

Password

[I forgot my password.](#)

GO >>

Registration

Need to [register](#) for an account? [Click Here.](#)

Registration

- Necessary registration information:

Portal Setup

[Help](#) [Detailed Registration Instructions \(PDF\)](#)

Group/Clinic Registration

1. [My Medical Group](#) **To Do: Please confirm that your Medical Group contact information is complete and accurate.**
2. [Clinic Sites](#) **To Do: Please confirm that your list of clinics is complete and accurate.**
3. [Providers](#) **To Do: Please upload your group's provider information.**

- Clinic specialties determine which measures a clinic is required to report.
- Must complete registration before February 9, 2018 and before data can be submitted.

Clinic Registration

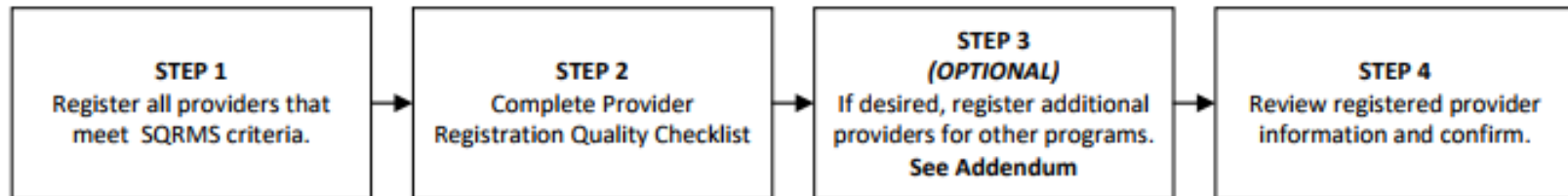
- All individual clinic sites that meet all of the following criteria must register:
 - Located within the state of Minnesota
 - Provides primary or specialty care ambulatory services for a fee
 - Has one or more physicians providing services
 - Provided services to patients at any time during the 2017 calendar year
 - The clinic site location is a building, separate space or an entity with a street address that is a functional unit easily understood by patients/consumers
- These requirements apply to existing clinics as well as newly opened/acquired clinics
 - Satellite clinics that bill services through a main site are not required to register.

Clinic Registration

- Multi-specialty clinics have two registration options:
 - Option 1: Register and report data as one single clinic site.
 - Option 2: Register each individual specialty as a separate 'clinic'.
- If a medical group only has one clinic site, the clinic site must still be registered.
- Submitting data from multiple clinics as a single entity (roll-up):
 - Medical groups whose clinics meet **all** of the following criteria may choose to roll-up data:
 - **ALL** clinics in the medical group have common ownership
 - The total number of providers across **ALL** clinic locations is no greater than 20 FTEs
 - **ALL** clinics in the medical group have a majority of common providers working across multiple locations
 - All eligible clinics must be registered even if rolling-up data
- Use publically recognized names for medical groups and clinics

Provider Registration

Provider Registration Process Flow Chart



- All clinics meeting registration criteria must register the following provider types:
 - Medical Doctor (MD)
 - Doctor of Osteopathy (DO)
 - Physician Assistant (PA)
 - Advanced Practice Registered Nurse (APRN)
- Providers delivered services billed by the clinic
- Provider registration is **not** tied to data submission

Optional: Other Provider Registration

- The MNCM Data Portal allows registration of other providers not included in the SQRMS mandate.
 - Examples of other providers include but are not limited to:
 - Dietitians
 - Licensed counselors
 - Pharmacists
 - Physical therapists
 - Optometrists
- These providers are registered via a separate upload in the provider registration process.
 - 2018 Annual Clinic and Provider Registration Addendum

Measures

- Cycle A:
 - Colorectal Cancer Screening
 - Optimal Diabetes Care
 - Optimal Vascular Care
 - Asthma
 - Depression Care: Remission at 6 months
- Cycle B:
 - Pediatric Preventive Care: Adolescent Mental Health and/or Depression Screening
 - Total Knee Replacement
 - Spine Surgery: Lumbar Fusion
 - Spine Surgery: Lumbar Discectomy/Laminotomy
- Other measures:
 - Health Information Technology (HIT) Survey
 - Patient Experience of Care Survey

Major Reporting Changes

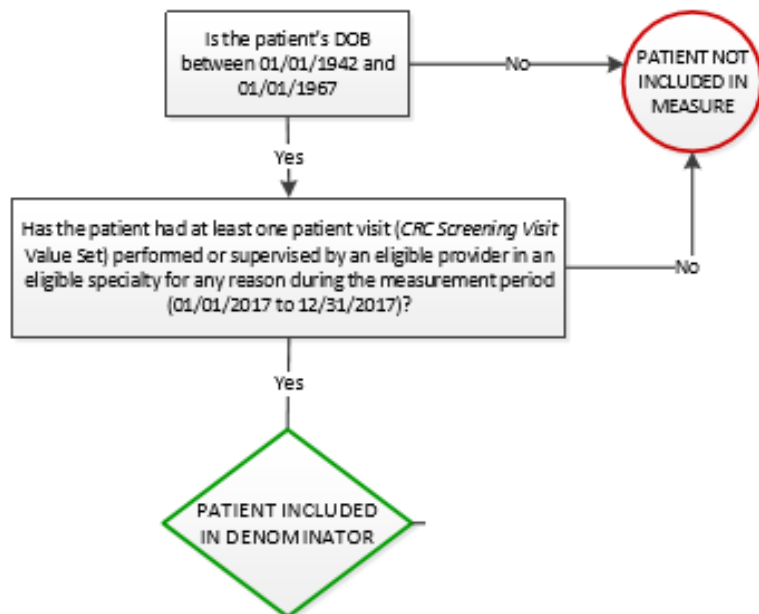
- Colorectal Cancer Screening
 - Cycle A Dates of Submission
 - Dates of Service: 1/1/2017 – 12/31/2017
- Asthma
 - Cycle A Dates of Submission
 - Dates of Service: 1/1/2017 – 12/31/2017
- Depression
 - Dates of Service: 2/1/2017 – 12/31/2017
 - Preparations for 2020 Report Year
- Patient Experience of Care Survey
 - MN CM exploring continuation
- Maternity Care: C-Section Rate
 - Measure Retirement
- Pediatric Preventive Care: Overweight Counseling
 - Measure Retirement

Surveys

- Health Information Technology (HIT) Survey
 - Survey that assesses adoption, utilization and exchange functions of clinics' Electronic Health Record (EHR) system
 - Web based survey completed annually
 - Surveys completed at clinic level
- Patient Experience of Care (PE) Survey
 - Every other year measure
 - Assesses patient experience in the clinic

Colorectal Cancer Screening

- **CHANGE** Measurement Period: Jan 1, 2017 through Dec 31, 2017
- Eligible Population:



- **CHANGE** Patient had at least one patient visit (*CRC Screening Visit Value Set*) performed or supervised by an eligible provider in an eligible specialty during the measurement period.
- See Data Collection Guide for allowable exclusions
 - **CHANGE** Death prior to end of the measurement period removed as an allowable exclusion.

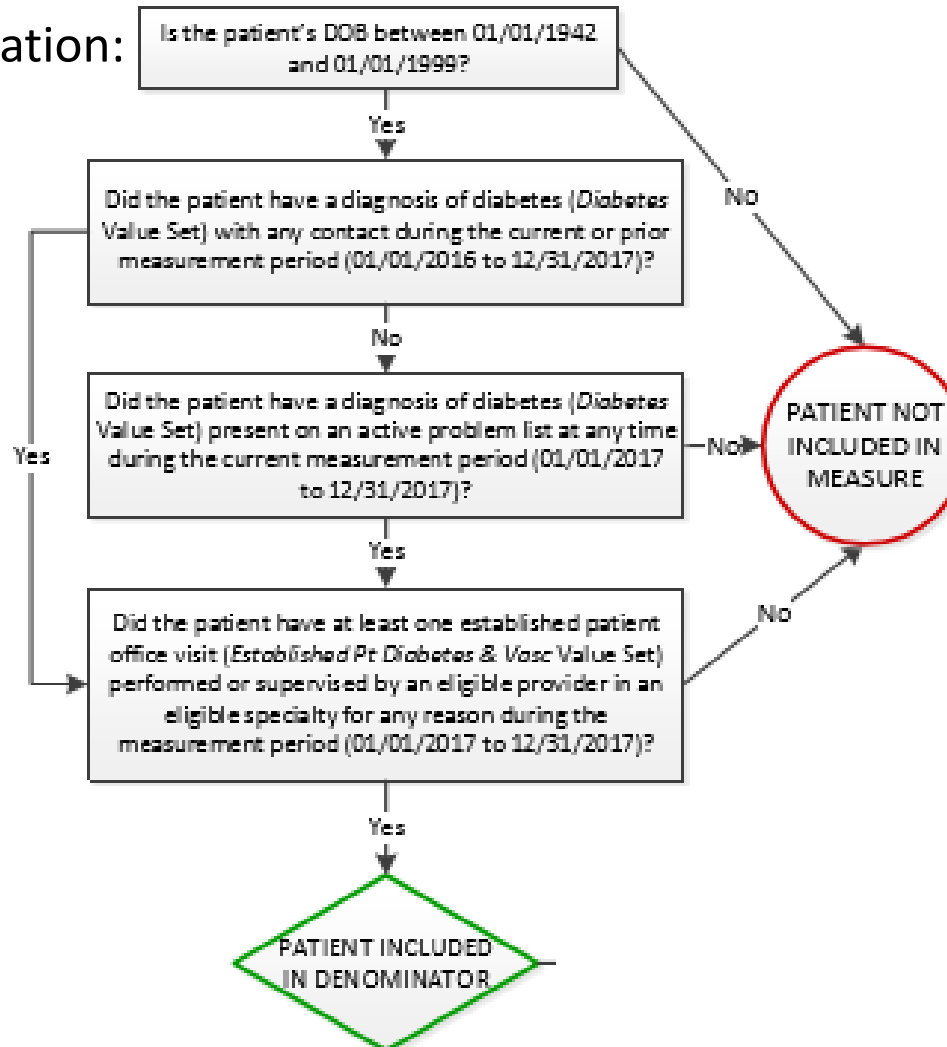
Colorectal Cancer Screening

(Continued)

- Numerator:
 - Number of patients who are up-to-date with an appropriate screening exam:
 - Colonoscopy
 - Sigmoidoscopy
 - CT colonography
 - FIT-DNA Test
 - Stool Blood Tests [FIT or gFOBT]

Optimal Diabetes Care

- Measurement Period: Jan 1, 2017 – Dec 31, 2017.
- Eligible Population:



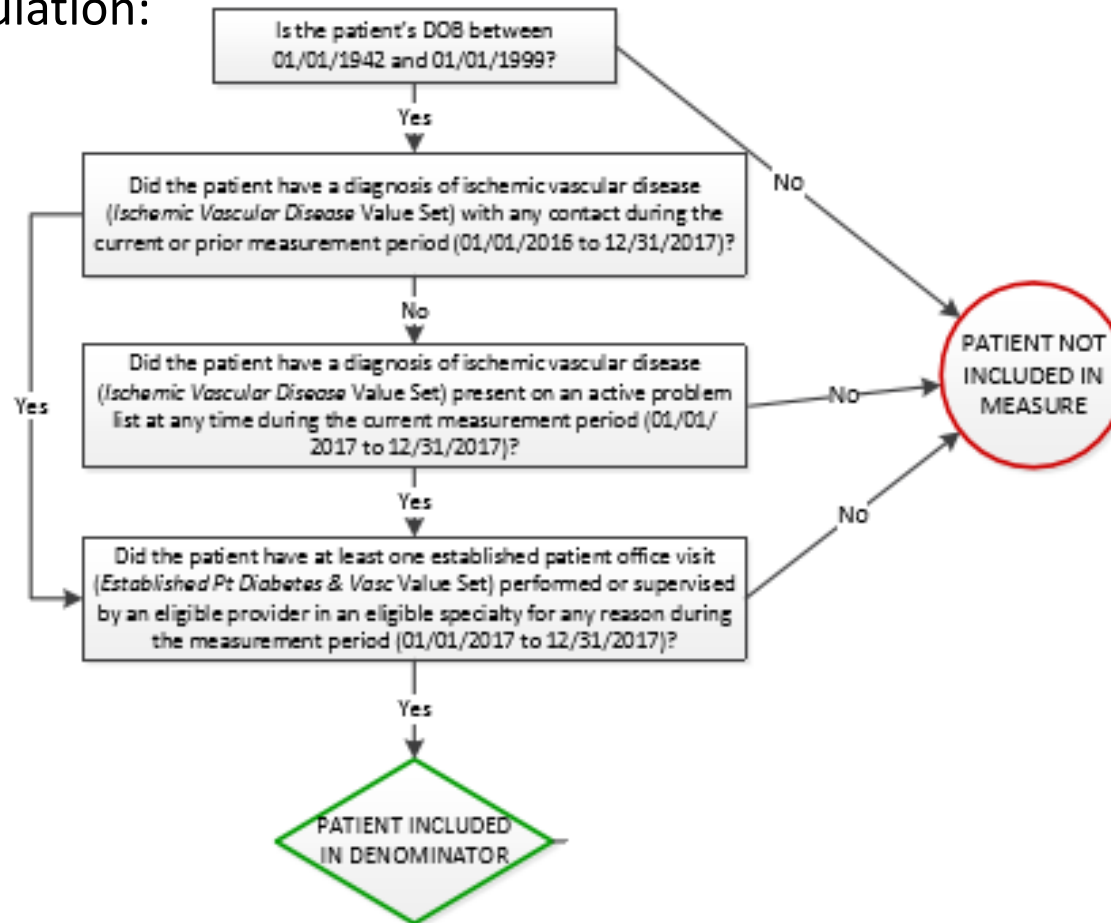
Optimal Diabetes Care

(Continued)

- Patients meeting all five of the following targets are numerator compliant:
 - HbA1c <8.0 mg/dL
 - Blood pressure is systolic <140 mmHg AND diastolic <90 mmHg.
 - Not a tobacco user
 - On a statin medication
 - If patient has ischemic vascular disease, is on a daily aspirin or anti-platelet medication

Optimal Vascular Care

- Measurement Period: Jan 1, 2017 – Dec 31, 2017.
- Eligible Population:



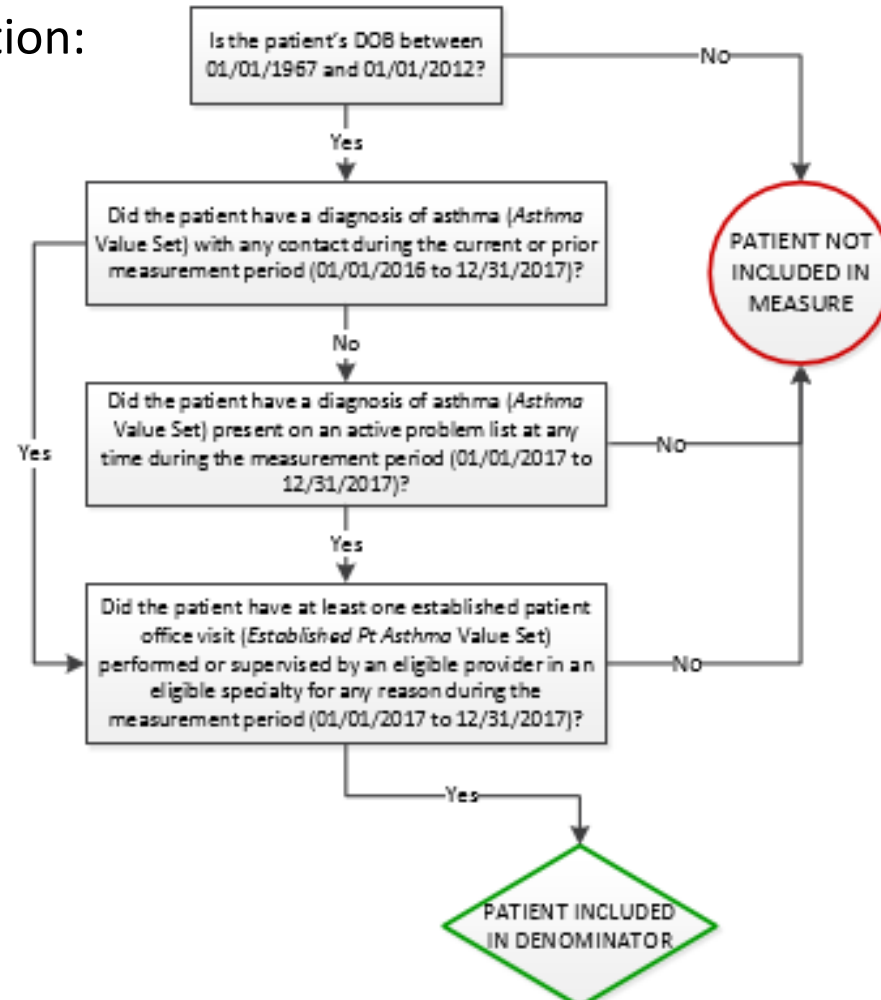
Optimal Vascular Care

(Continued)

- Patients meeting all four of the following targets are numerator compliant:
 - Blood pressure is systolic <140 mmHg AND diastolic <90 mmHg.
 - Not a tobacco user
 - On a statin medication
 - On a daily aspirin or anti-platelet medication

Asthma Measures

- **CHANGE** Measurement Period: Jan 1, 2017 through Dec 31, 2017
- Eligible Population:



Asthma Measures

(Continued)

- Optimal Asthma Control Numerator:
 - Number of patients who meet all of the following targets:
 - Asthma control tool result indicates patient's asthma is well controlled
 - Patient reported a total number of emergency department visits and hospitalizations due to asthma less than 2
- Asthma Education and Self-Management Numerator:
 - Number of patients that have a written asthma management plan

Depression Remission at 6 Months

- Eligible Population:
 - An index visit must meet all of the following criteria:
 - Patient has a contact or face-to-face visit with an eligible provider in an eligible specialty.
 - Patient is 18 years of age or older.
 - Patient has a PHQ-9 result greater than nine.
 - Patient has an active diagnosis of major depression or dysthymia.
 - For psychiatry providers and behavior health providers with a psychiatrist on site only: The diagnosis must be the primary diagnosis.
 - **CHANGE** This requirement is applicable prior to 11/1/2017. Requirement is **no** longer applicable on or after 11/1/2017.
 - The patient is NOT in a prior index period.

Depression Remission at 6 Months

(Continued)

- Follow-up PHQ-9 Scores:
 - For indexed patients:
 - Submit all follow-up PHQ-9 scores during the 13 month index period
 - Include all scores.
- Total population submission required.
- **CHANGE** Dates of Service for data submission in 2018: Feb 1, 2017 through Dec 31, 2017

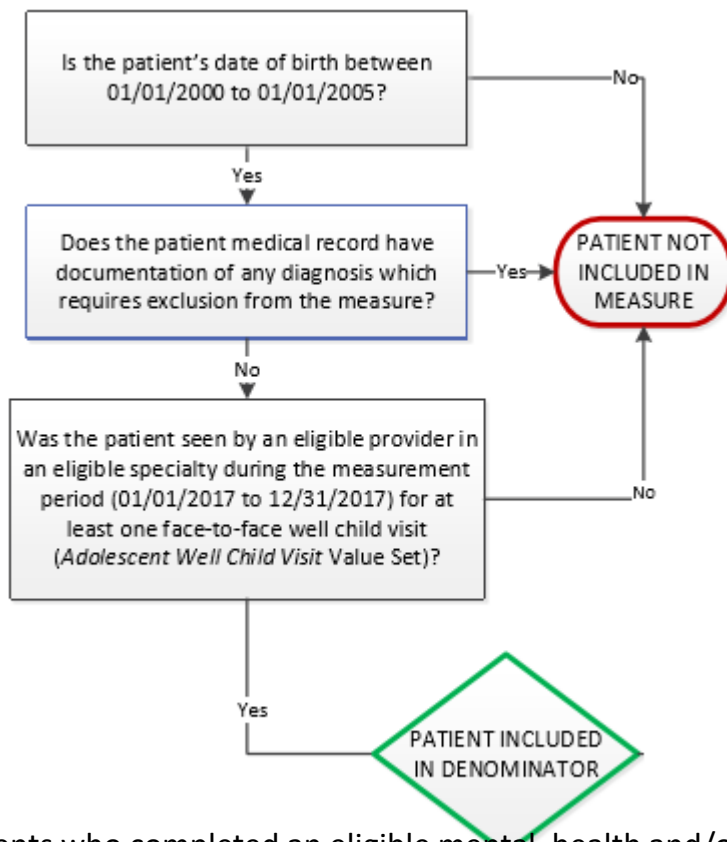
Numerator: # adult with depression and PHQ-9 score <5 at 6 months(+/- 30 days)

- Denominator: # adult with depression AND index contact PHQ-9 >9
 - Dates of Index: Dec 1, 2015 – Nov 30, 2016
 - Dates of Follow-Up: May 2, 2016 – Jun 29, 2017

Pediatric Preventive Care:

Adolescent Mental Health and/or Depression Screening

- Measurement Period: Jan 1, 2017 – Dec 31, 2017
- Eligible Population:



- Numerator:
 - The number of patients who completed an eligible mental health and/or depression screening tool during the measurement period, AND have the screening tool result documented in the medical record.

Total Knee Replacement

- Measurement Period: Jan 1, 2016 – Dec 31, 2016
- Eligible Population:
 - Patient was 18 years of age or older
 - Patient received primary or revision total knee replacement surgery
- Total Population submission required
- Measures:
 - Average change in patients' post-op functional status at one year post-op
 - Average change in patients' quality of life at one year post-op

Spine Surgery: *Lumbar Fusion*

- Measurement Period: Jan 1, 2016 – Dec 31, 2016
- Eligible Population:
 - Patient was 18 years of age or older
 - Patient received lumbar spine fusion surgery
 - See Data Collection Guide for required exclusions
- Total Population submission required
- Measures:
 - Average change in functional status at one year post-op
 - Average change in pain at one year post-op
 - Average change in quality of life at one year post-op

Spine Surgery:

Lumbar Discectomy/Laminotomy

- Measurement Period: Jan 1, 2016 – Dec 31, 2016
- Eligible Population:
 - Patient was 18 years of age or older
 - Patient received lumbar discectomy laminotomy surgery for a diagnosis of disc herniation
 - See Data Collection Guide for required exclusions
- Total Population submission required
- Measures:
 - Average change in functional status at three months post-op
 - Average change in pain at three months post-op
 - Average change in quality of life at three months post-op

DDS Requirements

Direct Data Submission (DDS):

- Agree to the DDS Terms and Conditions
- Electronically complete a Business Associate Agreement with MNCM.
- Submit a patient-level file that includes data from all eligible clinic.
- Participate in the data validation process.
- Have results publicly reported.
- Adhere to all timelines and formatting specifications.

Pre-Submission Data Certification

- Formerly ‘Denominator Certification’.
- Each measure has its own Pre-Submission Data Certification form
- Documentation needed:
 - Describe process used to identify patients.
 - Complete Pre-Submission Data Certification.
 - Source code, query, screen shots.
 - Upload document to MNCM Data Portal.
- MNCM staff reviews documentation
 - Will contact the primary contact with questions

Total Population vs. Sample

- Total population:
 - Most precise rates.
 - Submit total population when:
 - Measure requires total population submission
 - MDH EMR Reporting Rule: total population required if EMR was in place for the full measurement period and the 12 months prior to the measurement period
 - Population is under 60 eligible patients
 - Random sample:
 - Each clinic must submit:
 - 60 patients per clinic, per measure, per population

Data Collection

- Occurs:
 - After pre-submission documentation is approved
 - After billing and patient records are complete for dates of service
- Data collection tools (Found under Resources tab)
 - Data Collection Guides
 - Value Set Dictionaries

Colorectal Cancer Screening Data Collection Tools

1. [2018 Insurance Coverage Data Elements, Field Specifications and Codes](#)
2. [2018 Race/Ethnicity/Language \(REL\) Data Elements, Field Specifications and Codes](#)
3. [Colorectal Cancer Screening Pre-Submission Data Certification Form](#) **New - October 12, 2017**
4. [Colorectal Cancer Screening 2018 Data Collection Form](#)
5. [Colorectal Cancer Screening 2018 Data Collection Spreadsheet Template](#)
6. [Colorectal Cancer Screening 2018 Exclusions Template](#)

Data Validation

- Data Validation has four steps:
 - Pre-Submission Data Certification
 - Data quality checks
 - Validation audit
 - Two-week medical group review

Results

- Results are reported by:
 - MN Community Measurement
 - MNHealthScores.org
 - Health Care Quality Report
 - Health Equity of Care Report
 - Health Care Disparities Report
 - Minnesota Department of Health
 - Health Plans
 - Providers
 - Purchasers
 - Others



Resources

- MNCM site: www.mncm.org
 - Download registration instructions and other tools
 - Learn about upcoming Q&A calls and webinars
- MNCM Data Portal: <https://data.mncm.org/login>
 - Register clinics and providers
 - Register contact info to receive communications
 - Resources tab
 - Download planning calendar
 - Download Q&A Call calendar
 - Download data collection guides and tools
 - FAQs by measure/topic
- Questions about registration and technical support
 - Monthly Q&A Call - 3rd Thursday of every month, 12:00 pm
 - support@mncm.org
 - Helpline: 612-746-4522

Thank you!

- MNCM Data Portal
<https://data.mncm.org/login>
- MNCM corporate website
www.mncm.org
- MNCM consumer website
www.mnhealthscores.org
- Questions
 - support@mncm.org
 - 612-746-4522

Lindsey Ziegler,
Project Specialist/Data Analyst
ziegler@mncm.org



Connect with us!

On the web
MNCM.org
MNHealthScores.org

On social media
[@mnhealthscores](https://twitter.com/mnhealthscores)
facebook.com/mnhealthscores
[Linkedin.com/company/mn-community-measurement](https://linkedin.com/company/mn-community-measurement)

