



2018 Cycle B Measures

Preparation for Submitting Data: Orthopedic Measures

Lindsey Ziegler

Project Specialist/Data Analyst

MN Community Measurement

- Accelerating the improvement of health through public reporting
- Our vision:
 - To be the primary trusted source for health data sharing and measurement
 - To drive change that improves health, patient experience, cost and equity of care for everyone in our community
 - To be a resource used by providers and patients to improve care
 - To partner with others to use our information to catalyze significant improvements in health



MN Community Measurement

- Reporting History
 - 2004: HEDIS measures by medical group.
 - Health plan data
 - 2006: Developed DDS Method to allow reporting measures by clinic
 - Data submitted voluntarily by clinics
 - 2010: Statewide Quality Reporting and Measurement System.

Agenda

Timeline

- Milestone Dates

Total Knee Replacement

- Measure Specifications

Lumbar Discectomy/Laminotomy

- Measure Specifications

Lumbar Fusion

- Measure Specifications

Data Submission Process

- Pre-Submission Data Certification
- Data File Preparation & Data Submission

Data Validation Process

- Quality Checks
- Audit Expectations

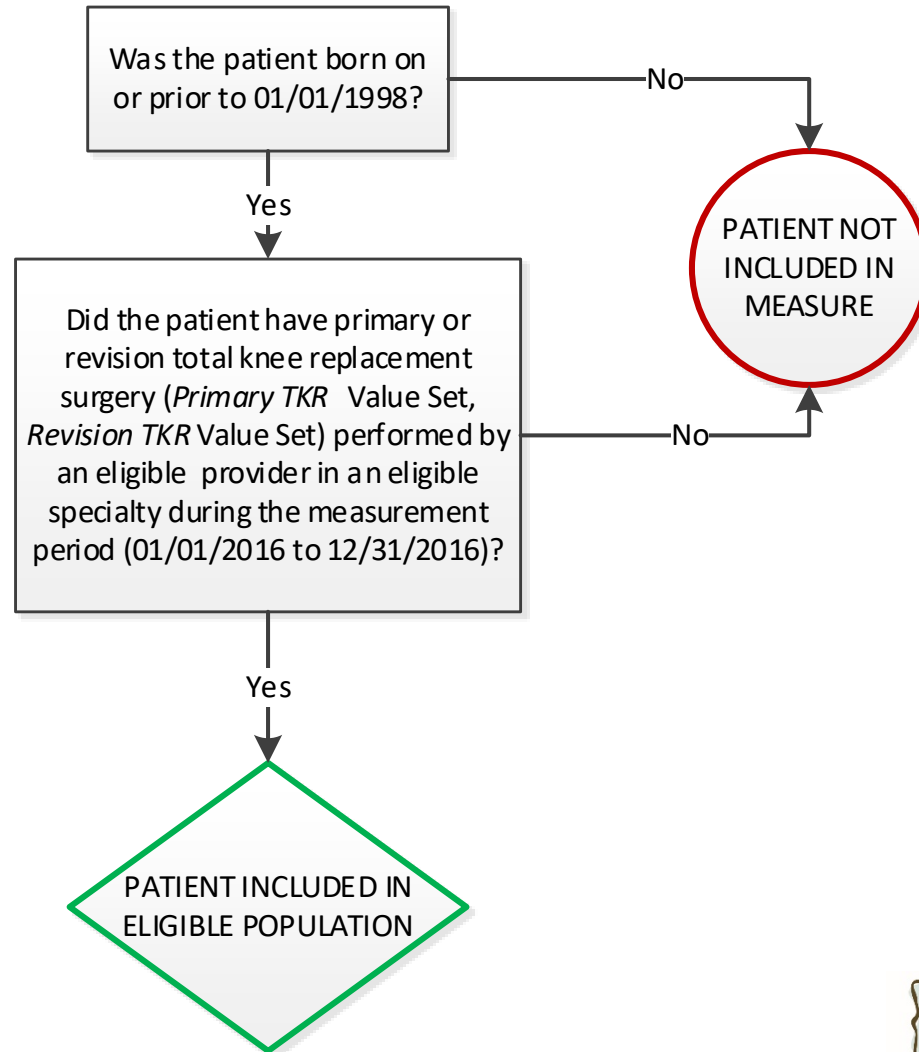
Resources

- Available tools and assistance

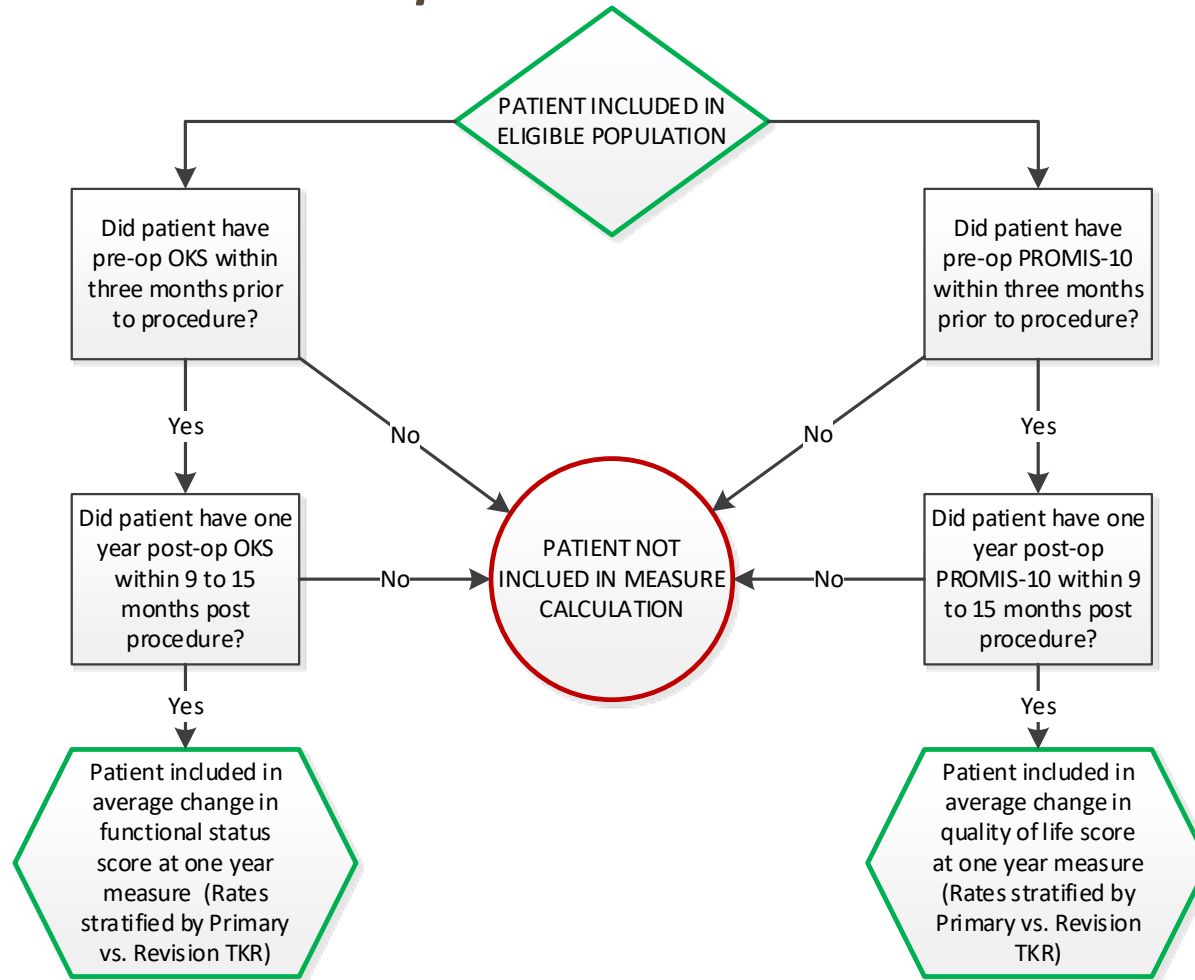
Timeline

Activity	Dates
Dates of Procedure	Jan 1 through Dec 31, 2016
Data Submission	Apr 16 through May 11, 2018
Data Validation (including Quality Checks & Audits)	April – July 2018
Final Results	October 2018

Total Knee Replacement *Eligible Population*

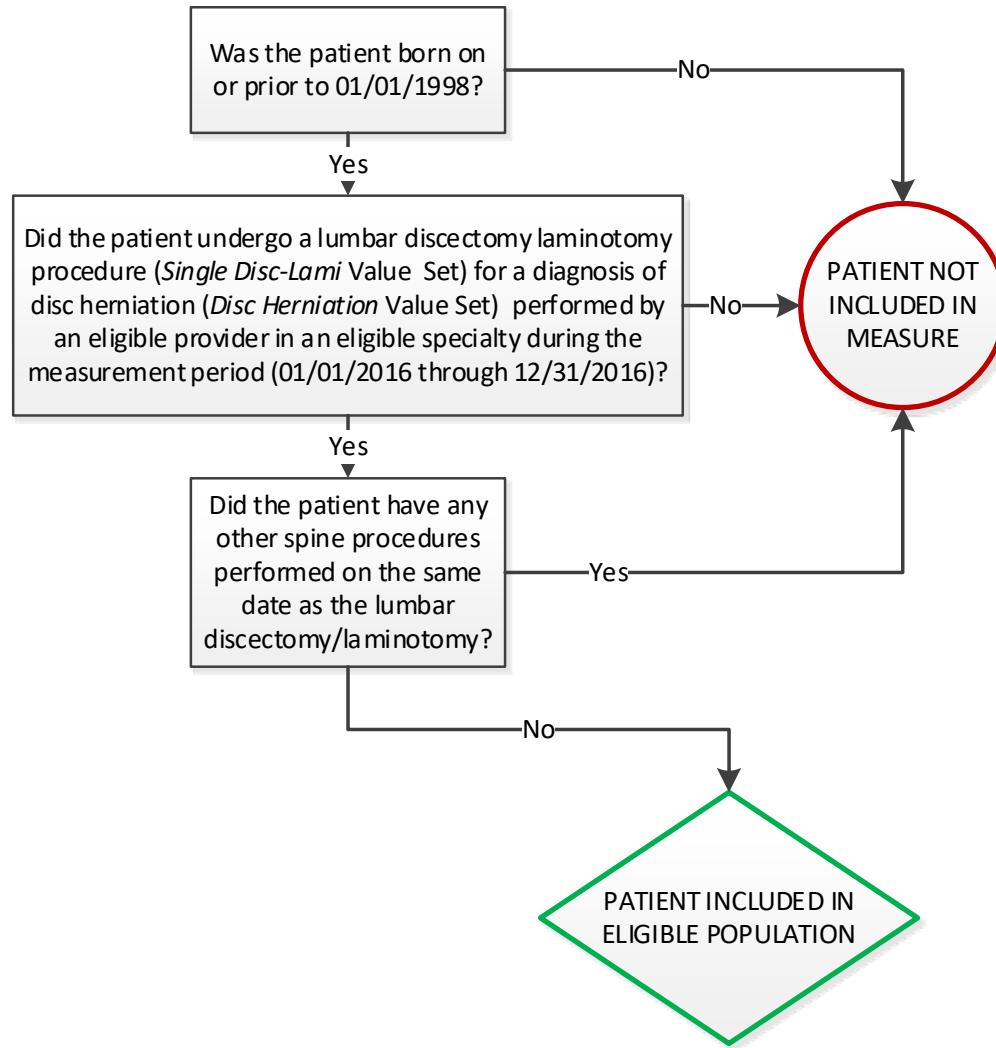


Total Knee Replacement *Patient Reported Outcome Measures*



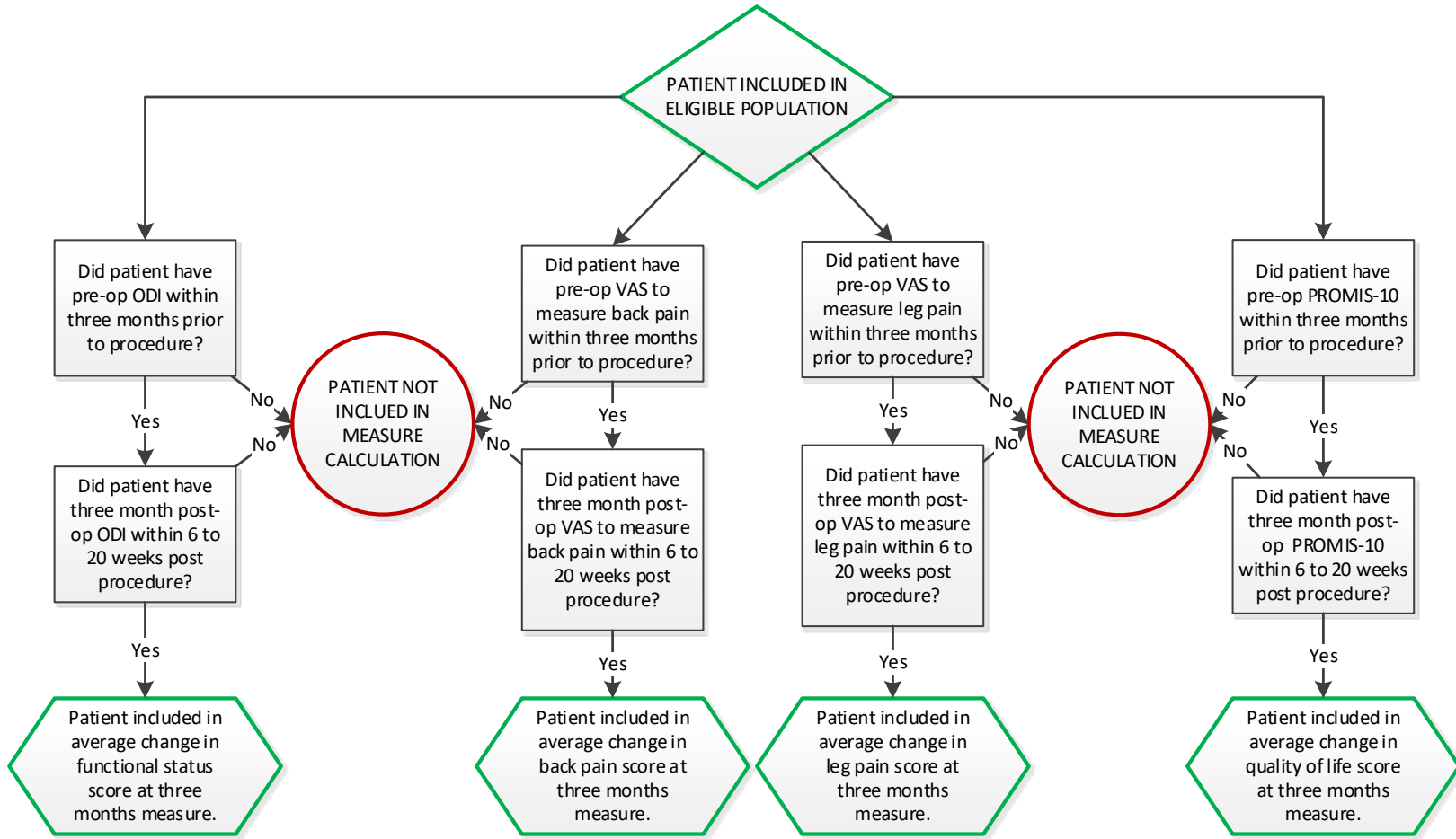
Spine Surgery:

Lumbar Discectomy/Laminotomy Eligible Population

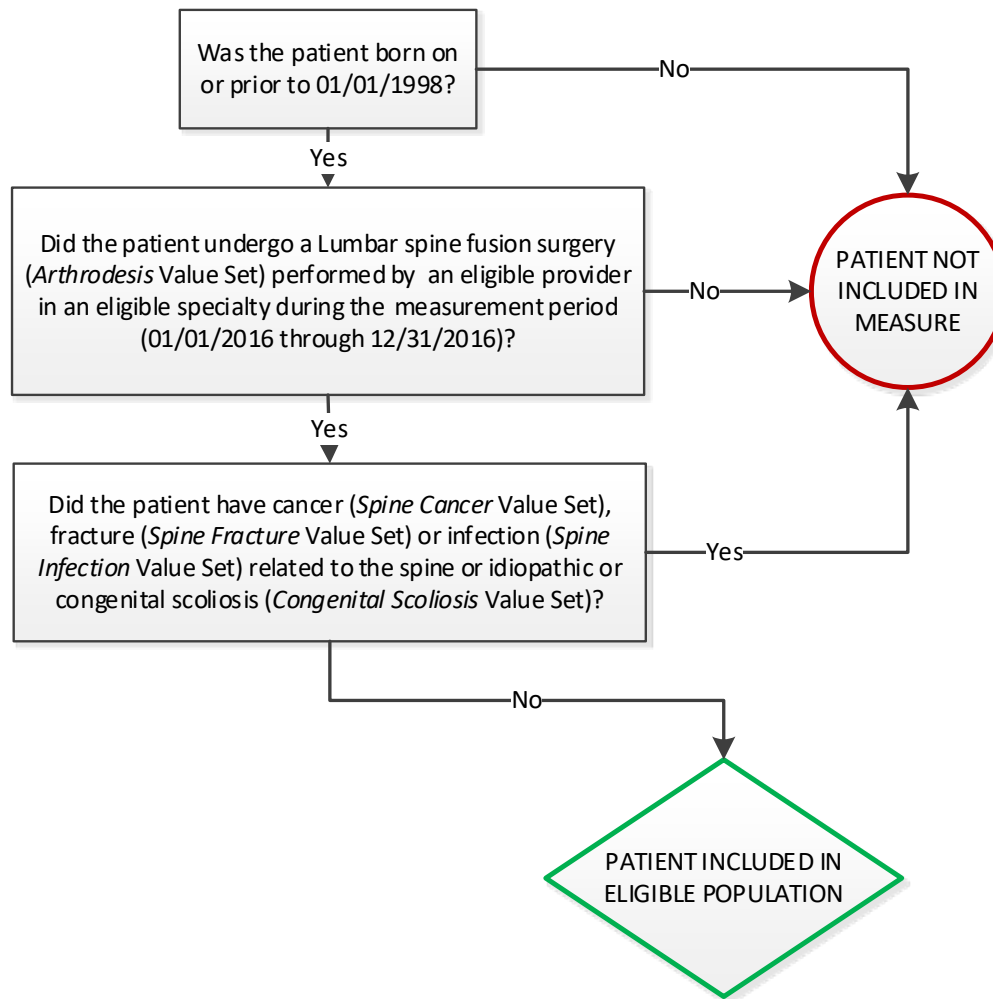


Spine Surgery:

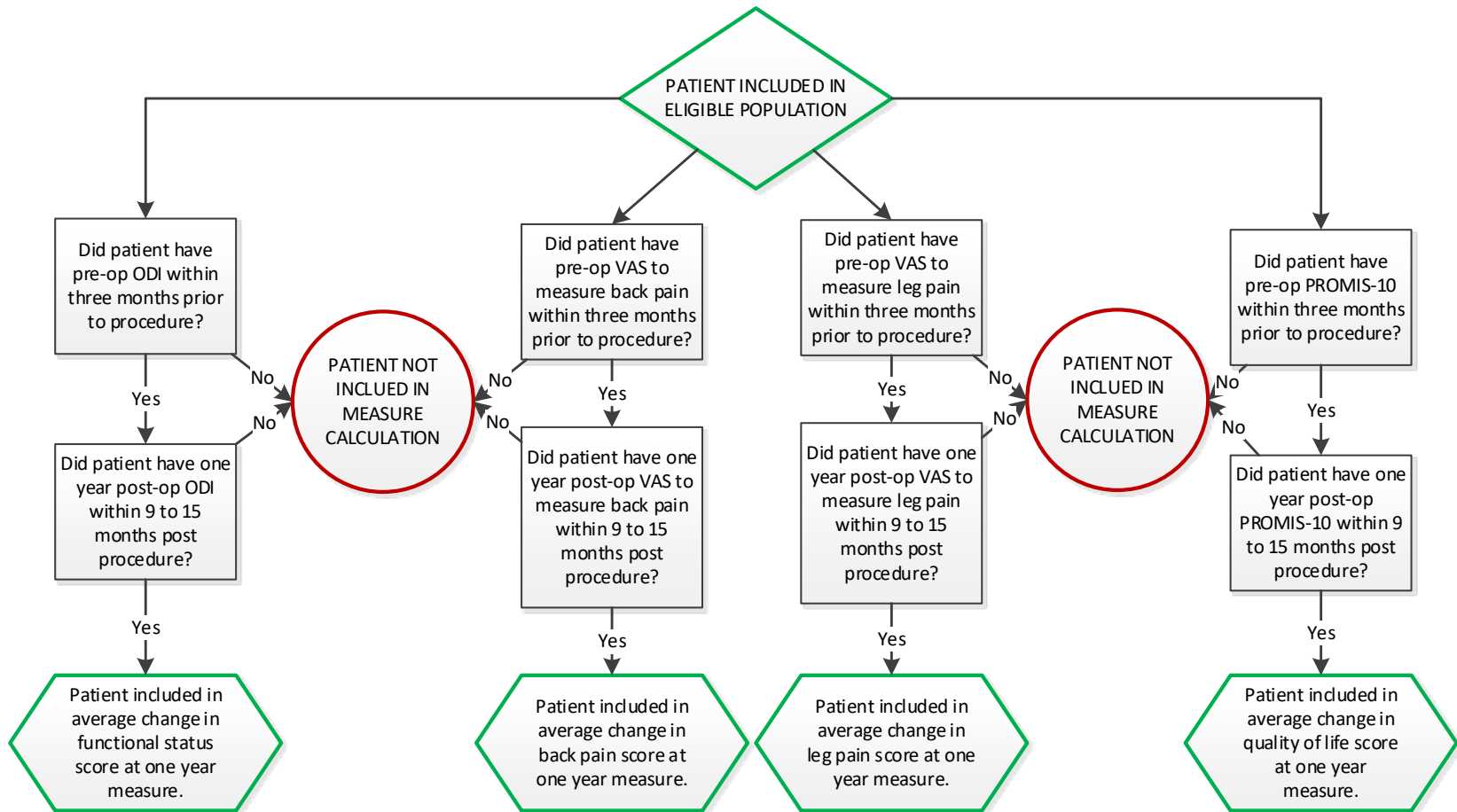
Lumbar Discectomy/Laminotomy Measures



Spine Surgery: *Lumbar Fusion Eligible Population*



Spine Surgery: Lumbar Fusion Measures



Data Submission Process

- Getting Started
 - MNCM Data Portal
 - Request access here: <https://data.mncm.org/login>

Welcome to the MNCM Data Portal!

Log In

Please Log In

E-mail Address

Password
 [I forgot my password.](#)

GO >>

Registration

Need to [register](#) for an account? [Click Here.](#)

Data Submission Process

(cont.)

- Data Collection Guide & Tools
 - All documents can be found on the Resources tab in the MNCM Data Portal
 - Data Collection Guide
 - Can also be accessed on [MNCM.org](https://mncm.org) under Submitting Data > Training and Guidance > Data Collection Guides > Cycle B Data Submission Measures
 - Value Set Dictionary
 - Patient Reported Outcome (PRO) Tools
 - Pre-Submission Data Certification Template
 - Data Collection Spreadsheet Template
 - Data Collection Form

Data Submission Process

(cont.)

- Pre-Submission Data Certification
 - Download and complete the Pre-Submission Data Certification Form.
 - Upload the form to the Data Portal
 - MNCM must review and approve document prior to data collection and submission
 - Details can be found in the applicable Data Collection Guide

Data Submission Process

(cont.)

- In the Data Portal:
 - Agree to Business Associate Agreement (BAA), if not previously completed
 - Agree to DDS Terms and Conditions for applicable measure
 - Make Data Files Transfer selection for applicable measure
 - Complete Exclusions step on Data Portal, if applicable

Data Submission Process

(cont.)

- Data File
 - Collect all data for all patients from all clinics in Data Collection Spreadsheet Template
 - Data elements and field specifications detailed in guide
 - Complete all quality checks
 - Save completed file in Excel (.xlsx) format and also in .csv format.
- Prior to data upload, confirm that you have:
 - MNCM Data Portal login
 - Patient level data file(s) (.csv format)

Data Submission Process

(cont.)

Step 1: Enter
Denominator

- Method Used for Data Collection
- REL Collection Best Practice Status

Step 2: Review
& Save

- Review data entered in Step 1

Data Submission Process

(cont.)

Step 3: Upload Data

- Import CSV data file
- Review & resolve any identified Errors or Warnings; Errors impede submission

Step 4: Review & Submit

- Complete Data Submission Quality Checklist
- Review preliminary results
- Supply comments explaining result changes from previous submission
- Click “Submit to MN CM”

Step 5: Done

- Download processed patient level data

Data Validation

- Data Validation process:
 - Pre-Submission Data Certification (prior to data collection)
 - Data quality checks
 - Validation audit
 - Two-week medical group review
- Audit conducted to validate that submitted data matches source data in patient's medical record
- Collaborative process between MNCM and medical group
- Occurs after data submission
- MNCM utilizes the NCQA "8 and 30" process for validation audits

Resources

- Resources tab in MNCM Data Portal
 - Data Collection Guides and Value Set Dictionaries
 - Data Collection Tools
 - Pre-Submission Data Certification Templates
 - Data Collection Forms
 - Data Collection Spreadsheet Templates
 - FAQ
 - Patient Reported Outcome (PRO) tools applicable to measures
- MNCM Helpline: 612-746-4522
- MNCM Support email: support@mncm.org
- Monthly Q & A Calls

Thank you!

- MNCM Data Portal
<https://data.mncm.org/login>
- MNCM corporate website
www.mncm.org
- MNCM consumer website
www.mnhealthscores.org
- Questions
 - support@mncm.org
 - 612-746-4522



Lindsey Ziegler, Project
Specialist/Data Analyst
ziegler@mncm.org

Connect with us!

On the web
MNCM.org
MNHealthScores.org

On social media
[@mnhealthscores](https://twitter.com/mnhealthscores)
facebook.com/mnhealthscores
[Linkedin.com/company/mn-community-measurement](https://linkedin.com/company/mn-community-measurement)

